

# Modul-Floor

WHEN EVERYTHING CLICKS



# YOU ALREADY KNOW HOW IT WORKS

For years, click-lock floors have been used in homes and offices. Bringing the concept to the commercial vehicles industry, we have refined it to meet our customers' demands for functionality, robustness and low weight.

## **PROTECTS THE RESIDUAL VALUE**

The days of drilling through the vehicle body are over. Our new floor and rails are installed using highly adhesive glue, which makes for a stronger installation and protects the residual value of the vehicle.

## **REDUCES YOUR COSTS**

Delivery costs for floors and linings can be almost as high as the price of the products themselves. Because we supply modules, designed to fit EURO-pallets, transportation costs are significantly reduced.

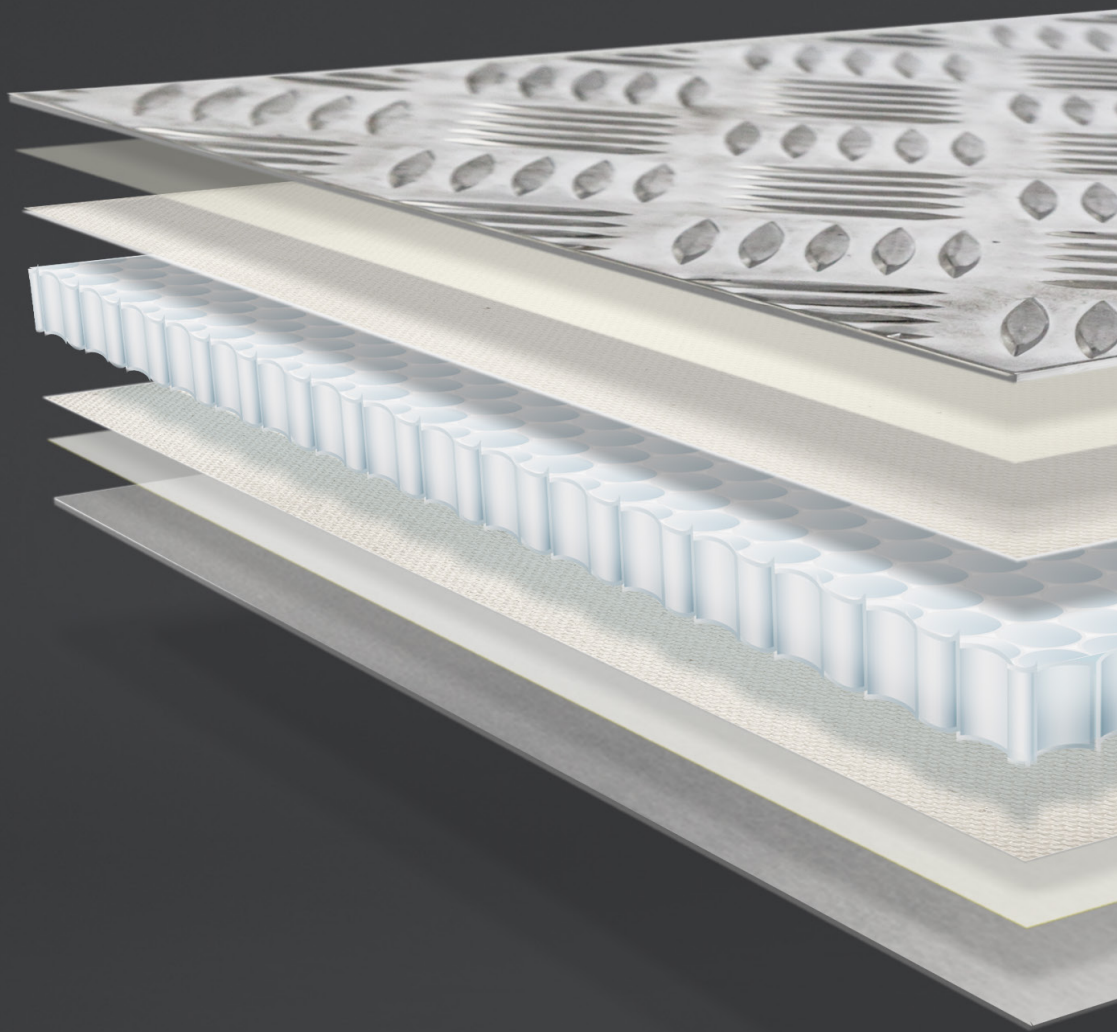
## **INCREASES YOUR PAYLOAD**

You can call it true teamwork, different materials working together, creating a system which is ergonomic, lightweight and robust. The lighter weight will increase the vehicle's payload, alternatively lower fuel consumption and emissions.

## **SIMPLIFIES INSTALLATION**

Using smaller, more manageable, modules instead of one large piece results in better ergonomics and more efficient handling of material in the workshop.

ALUMINIUM TREAD PLATE  
HIGHLY ADHESIVE GLUE  
NON-WOVEN  
HONEYCOMB  
NON-WOVEN  
HIGHLY ADHESIVE GLUE  
ALUMINIUM PLATE



MODUL-FLOOR SANDWICH CONSTRUCTION



#### **REDUCED INSTALLATION TIME**

Thanks to the smart design, the overall installation time is reduced, as the racking system is quickly secured in the rails.

#### **EASY TO DEMOUNT**

Fixing to the rails means that the racking system can be easily demounted and re-installed if required.

#### **BRACKETS WITH BUILT-IN SAFETY**

The floor and wall brackets have a built-in shock-absorbing feature to maximise safety.

#### **MODULAR FOR MAXIMUM FLEXIBILITY**

The brackets are modular to fit every installation perfectly.



### GLUED - NO DRILLING IN VEHICLE

The floor and rails are installed using highly adhesive glue, which results in a stronger installation than nuts and bolts.



### RAILS TO FACILITATE INSTALLATION

Mounted to the vehicle walls and ceiling if required, the rails facilitate the installation of racking systems and other accessories.



### INTEGRATED FLOOR RAILS

The floor has integrated rails for quick and safe installation of racking systems and other accessories.



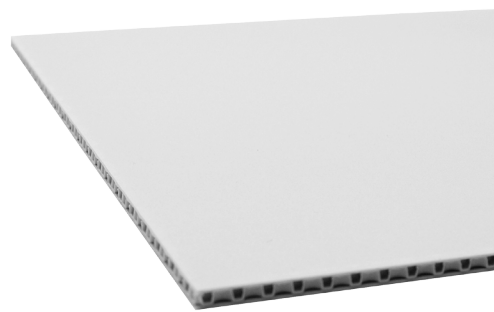
### ANTI-SLIP FLOORING

The floor surface is made from anti-slip aluminium tread plate, which contributes to a safer work environment.



### **LIGHTWEIGHT & ROBUST**

Thanks to a unique sandwich construction, the floor is both lightweight and robust.



### **LIGHTWEIGHT LININGS**

Pre-cut wall and ceiling linings, with quick, easy and non-intrusive installation.



### **SMART ACCESSORIES**

Accessories like lashing eyelets, lashing hooks and cargo bars are easily mounted directly onto the floor and wall rails.



### **MODULAR AND EASY TO INSTALL**

Click-lock floor with modules joined together using a tongue and groove method.



#### **INCREASED LOAD AREA**

The folding shelves solution increases the vehicle's effective load area by up to 50 percent.

#### **BULKHEAD WITH SLIDING DOOR**

Lightweight bulkhead with sliding door for quick and easy access to the load area.

#### **FOLDING SHELVES**

Ergonomic, lightweight folding shelves with high load capacity (120 kg/shelf).

#### **ACCESSORIES**

Lashing eyelets and hooks can easily be secured directly in the shelf end supports' integrated T-track profiles.

## THE NEXT MODULAR REVOLUTION STARTS TODAY

With close to 40 years' experience of working with modules, we are confidently taking modularity to the next level. The new flooring, lining and installation system is a true innovation, a fact supported by more than ten patents pending.

The system is equally suitable for vans with only floors and linings inside, as for traditional service vehicles, or parcel delivery vans.

As a total solution provider, Tevo Limited has much to offer. Please visit our website to find out more.



**TEVO LIMITED**

[www.tevo.eu.com](http://www.tevo.eu.com)