

Racking proposals for  
**FORD**  
Connect, Custom & Transit



[www.modul-system.co.uk](http://www.modul-system.co.uk)

# Introduction to Modul-System Limited

Modul-System Limited is a market leader for modular racking systems. The built-in versatility of a modular system means that you can configure a racking solution to meet your own individual requirement, whilst keeping costs down.

For nearly 40 years, we have worked closely with major manufacturers of light commercial vehicles and customers alike. This has helped us find the best solution to suit both the vehicle and the trade. In addition, it has enabled us to continually create new, innovative products. We are committed to developing products of the highest quality and were the first in the industry to introduce racking systems in ultra-high strength steel. This high tech material provides maximum strength and safety with minimum weight, which in turn means lower carbon emissions and fuel costs.

We are a total solution provider, which means we can offer the following resources to our customers:

- Fleet consultation and fleet specification documentation
- Build management and prototype sign off
- Pre delivery inspection
- Onward delivery
- In life maintenance
- A variety of installation options including:
  - Self-assembly
  - Installation at our production facility in Wooburn Green
  - On-site fitting by our national mobile installation teams
  - Nationwide third party installation partners

Through ISO 9001 certification we safeguard quality at every stage of the process, from development, manufacturing and delivery through to sales and customer service. We have also achieved ISO 14001 accreditation to further our commitment to improving the environment.

We are currently converting in the region of 3000 vehicles a year at our production facility.

We are affiliated to a number of organisations such as the SMMT. We are also a partner in the FTA's Van Excellence scheme and we are an approved converter under the VCA's N1 Enhancement scheme and the Ford QVM program.

For further information, quotations or to discuss  
your racking requirements please contact us:

**Sales Department - 01628 528034 (Option 2)**

**[sales@modul-system.co.uk](mailto:sales@modul-system.co.uk)**

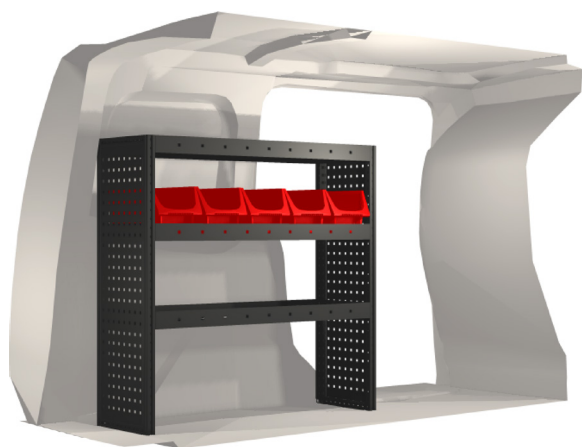


# Ford

## Connect L1 2.9 m<sup>3</sup> 2014-



www.modul-system.co.uk



20100394



864 mm



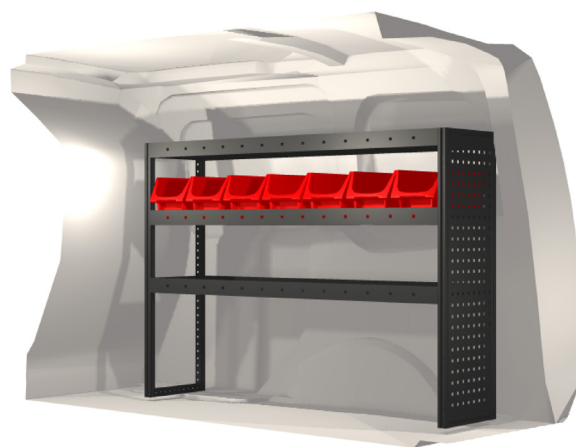
324 mm



918 mm



20.0



20100070



1188 mm



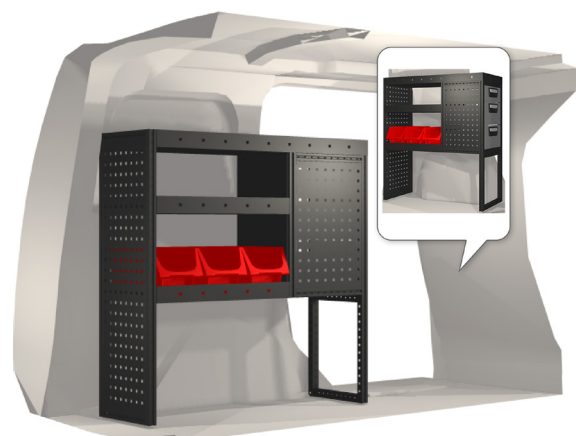
324 mm



918 mm



22.5



20100395



837 mm



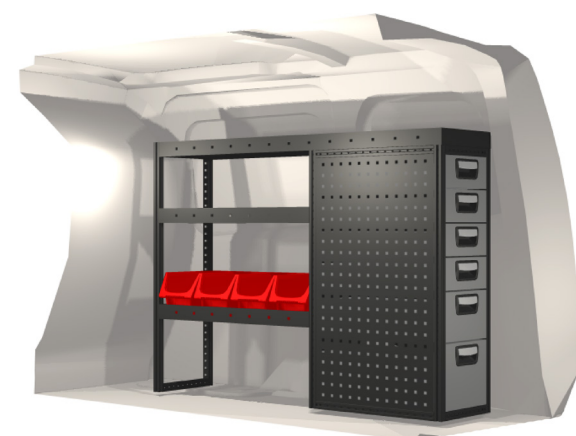
324 mm



918 mm



25.5



20100072



1161 mm



324 mm



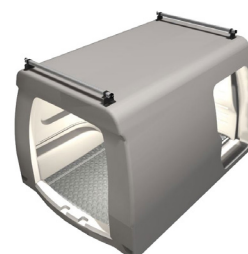
918 mm



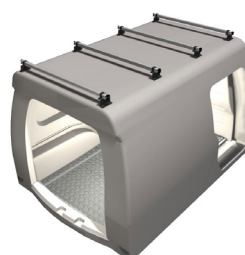
40.8



Floor and lining configuration will vary dependent on vehicle



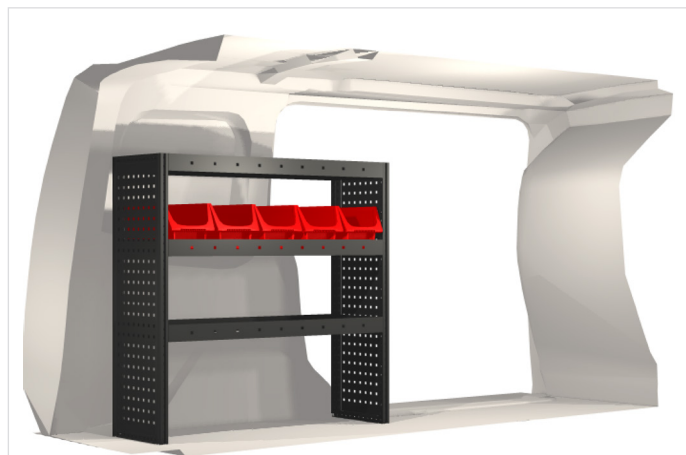
Roof bar kit  
Part No: RR160023000



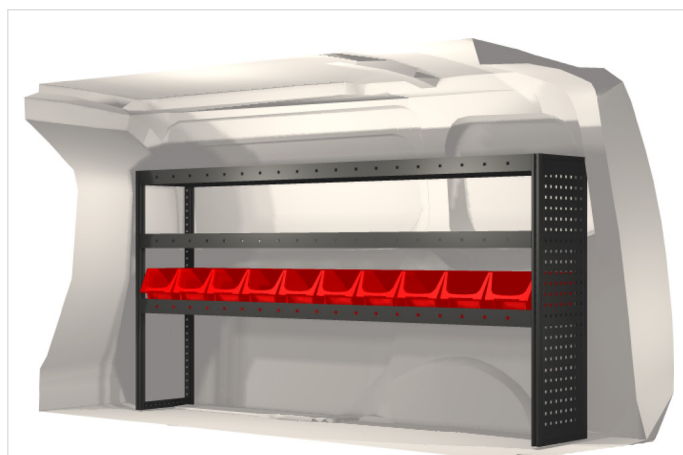
Roof bar kit  
Part No: RR161043000

# Ford

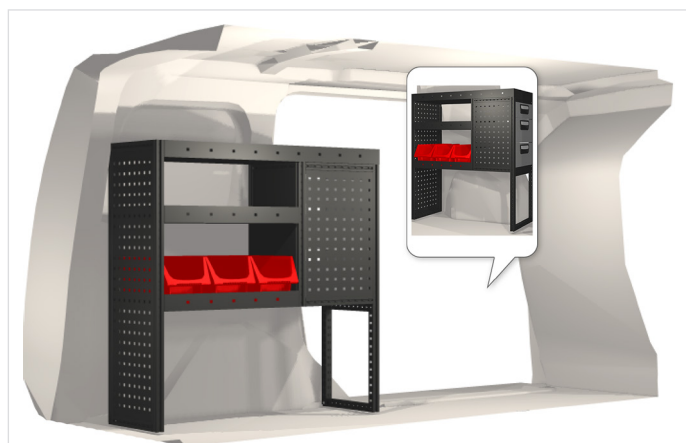
Connect L2 3.6m<sup>3</sup> 2014-



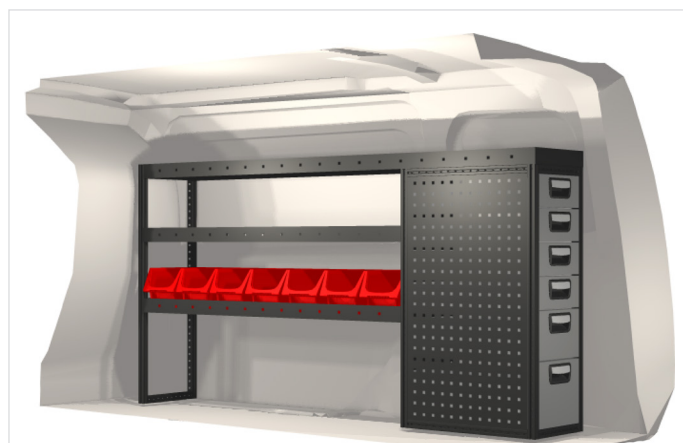
20100394	864 mm	324 mm	918 mm	20.0



20100080	1674 mm	324 mm	918 mm	31.7



20100395	837 mm	324 mm	918 mm	25.5



20100398	1647 mm	324 mm	918 mm	46.5



Floor and lining configuration will vary dependent on vehicle				





# Ford

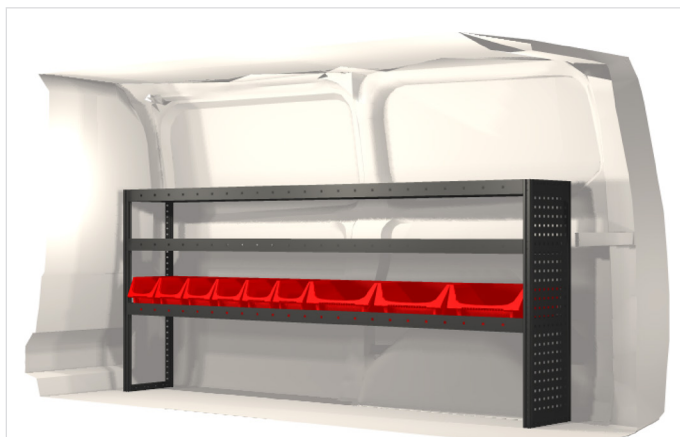


www.modul-system.co.uk

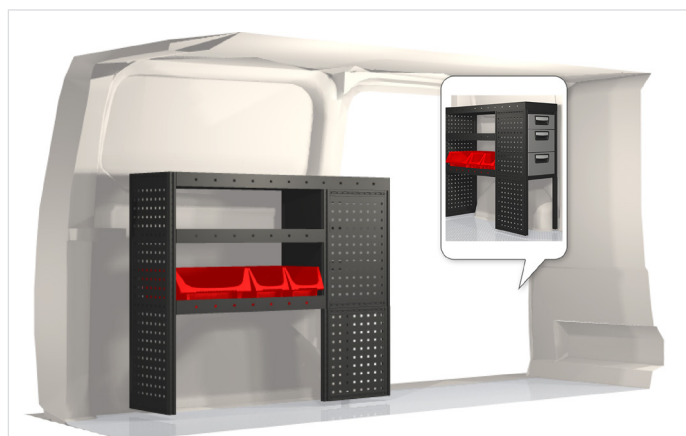
## Transit Custom L1 H1 6 m<sup>3</sup> 2013-



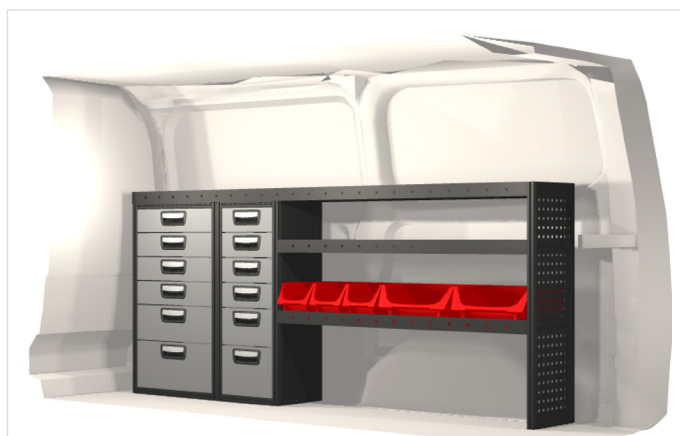
20100349	1026 mm	324 mm	918 mm	21.9



20100348	1998 mm	324 mm	918 mm	36.3



20100351	999 mm	324 mm	918 mm	28.9

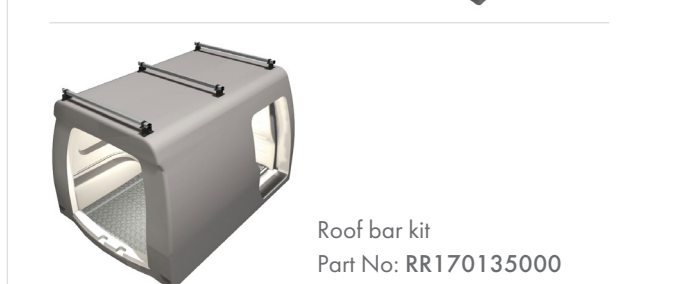


20100352	1971 mm	324 mm	918 mm	63.9



--	--	--	--	--

Floor and lining configuration will vary dependent on vehicle

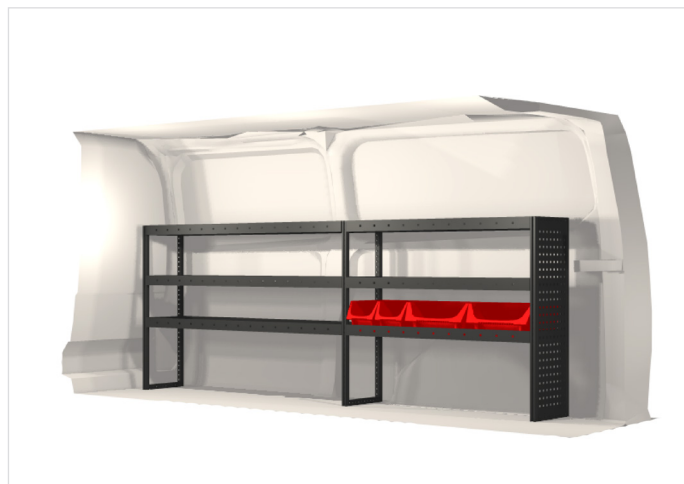


# Ford

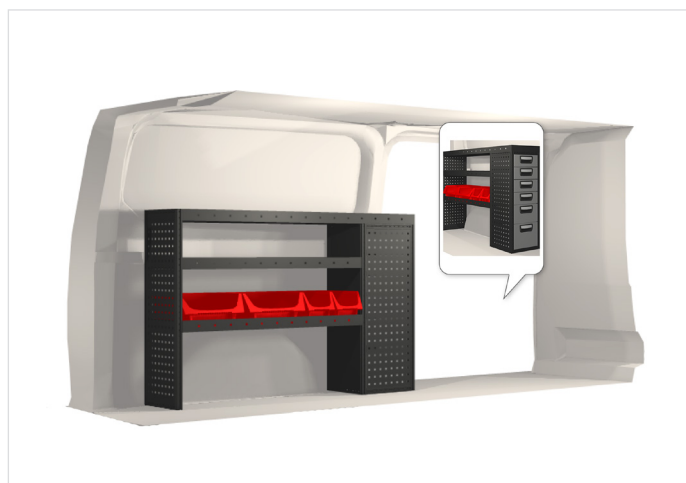
Transit Custom L2 H1 6.8 m<sup>3</sup> 2013-



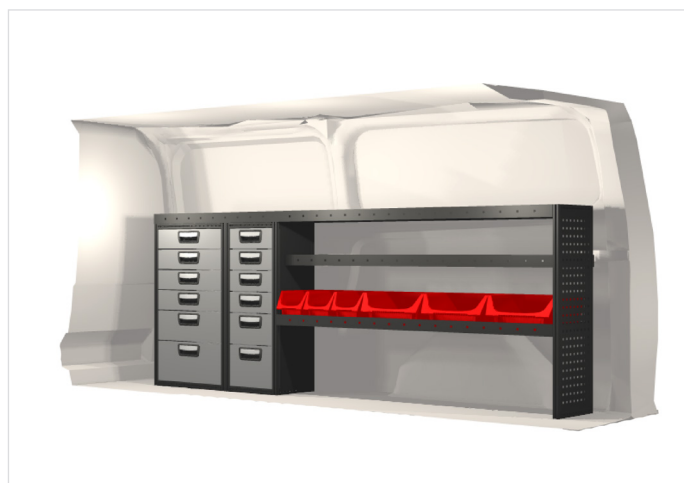
20100354	1350 mm	324 mm	918 mm	25.6



20100353	2349 mm	324 mm	918 mm	36.7



20100356	1323 mm	324 mm	918 mm	39.8



20100357	2295 mm	324 mm	918 mm	66.3



Floor and lining configuration will vary dependent on vehicle				

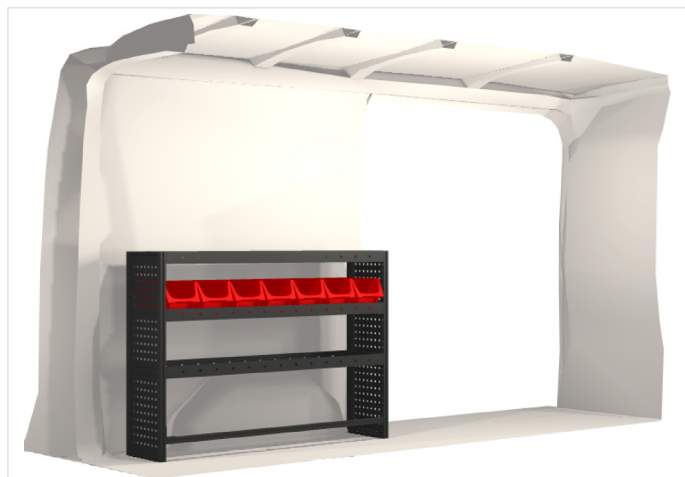


# Ford

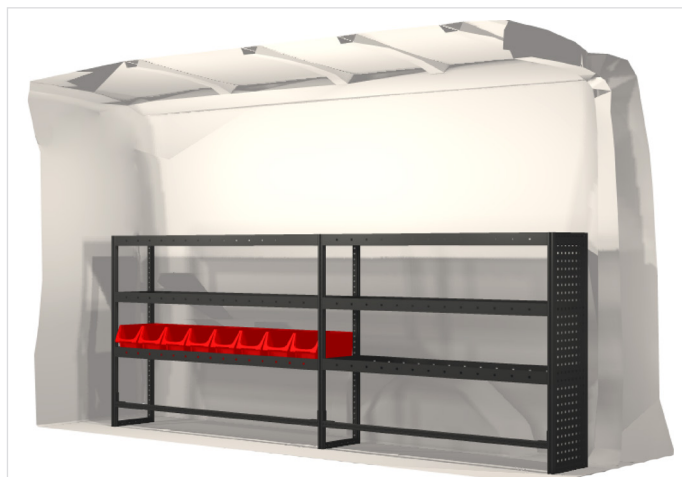


www.modul-system.co.uk

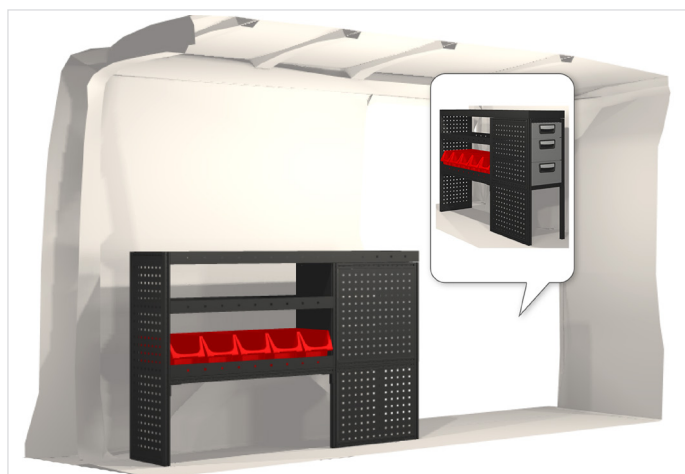
## Transit L2 H2 9.5 - 10 m<sup>3</sup> 2014-



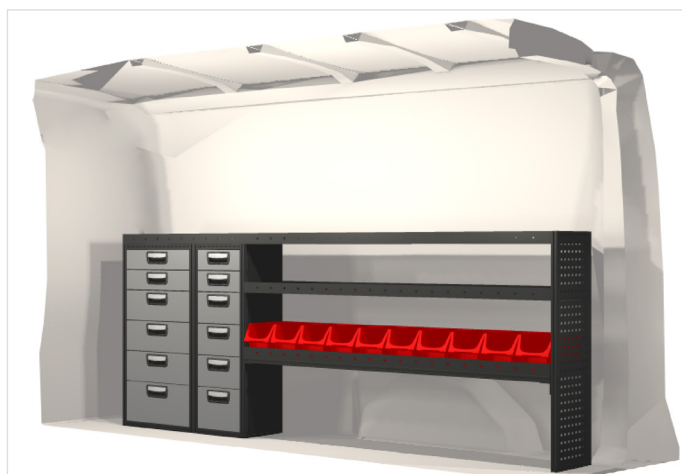
20100114	1188 mm	324 mm	918 mm	24.7



20100121	2511 mm	324 mm	1026 mm	41.9



20100115	1323 mm	324 mm	918 mm	34.9

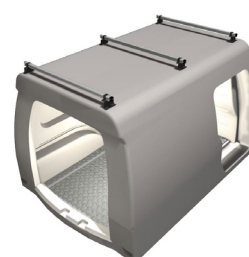
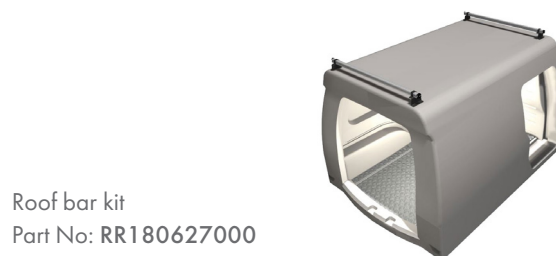


20100123	2457 mm	324 mm	1026 mm	78.8



--	--	--	--	--

Floor and lining configuration will vary dependent on vehicle



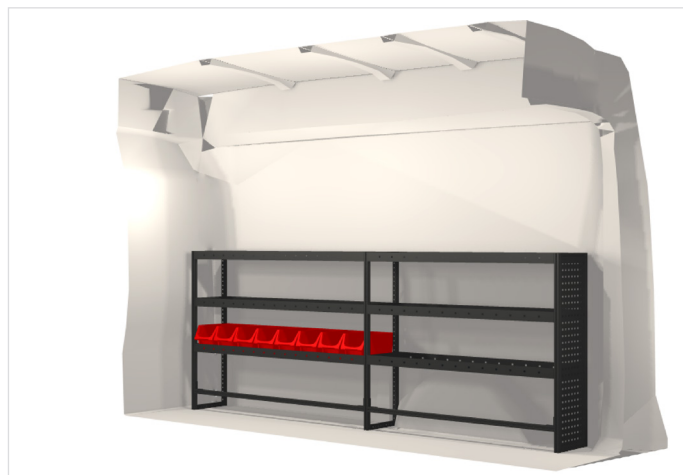


# Ford

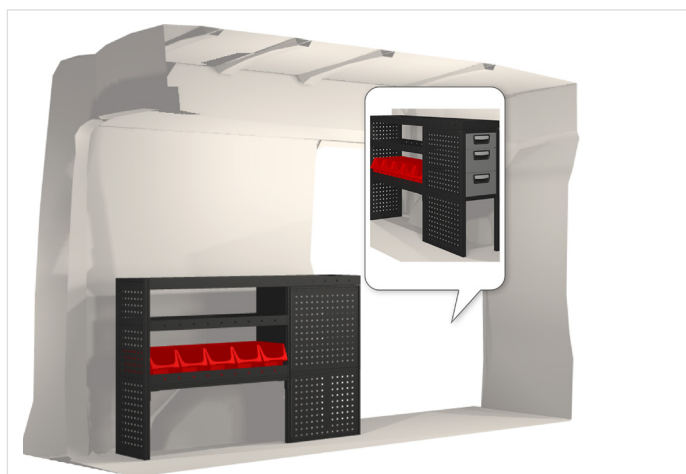
Transit L2 H3 10.7 - 11.2 m<sup>3</sup> 2014-



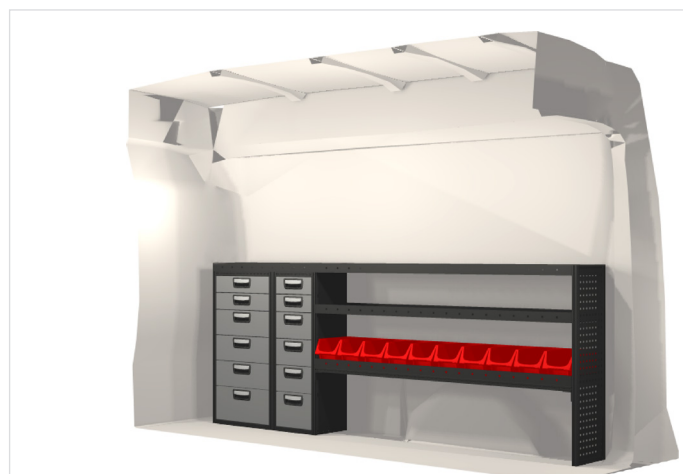
20100114	1188 mm	324 mm	918 mm	24.7



20100121	2511 mm	324 mm	1026 mm	41.9



20100115	1323 mm	324 mm	918 mm	34.9



20100123	2457 mm	324 mm	1026 mm	78.8



Floor and lining configuration will vary dependent on vehicle				



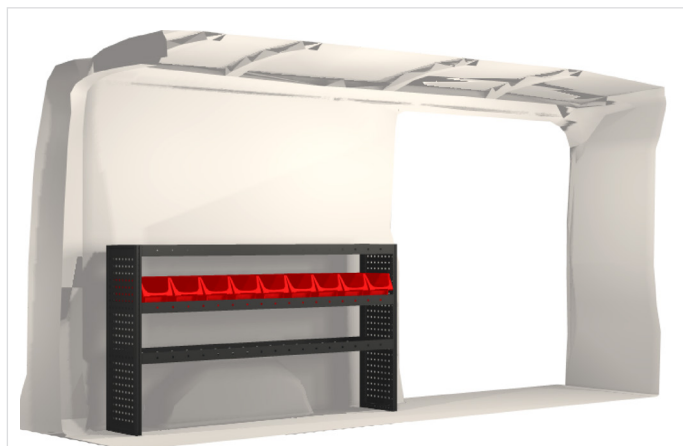


# Ford

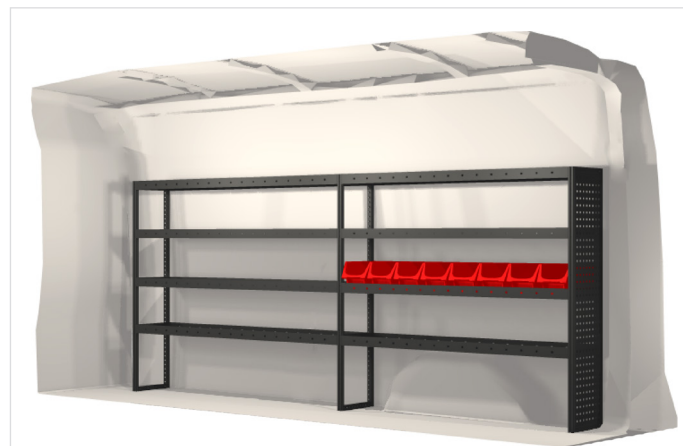


www.modul-system.co.uk

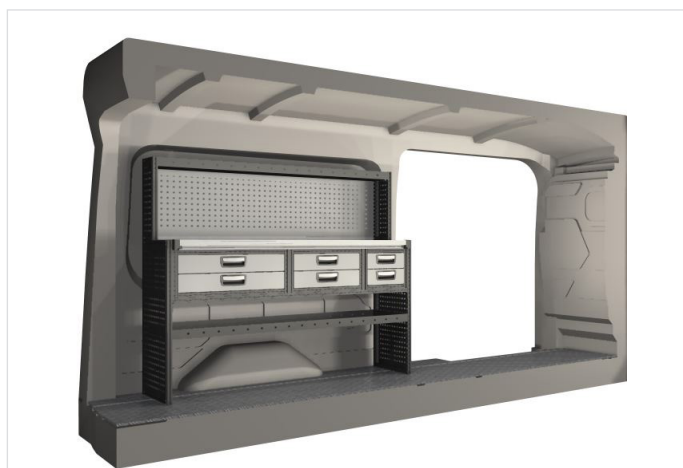
## Transit L3 H2 11 - 11.5 m<sup>3</sup> 2014-



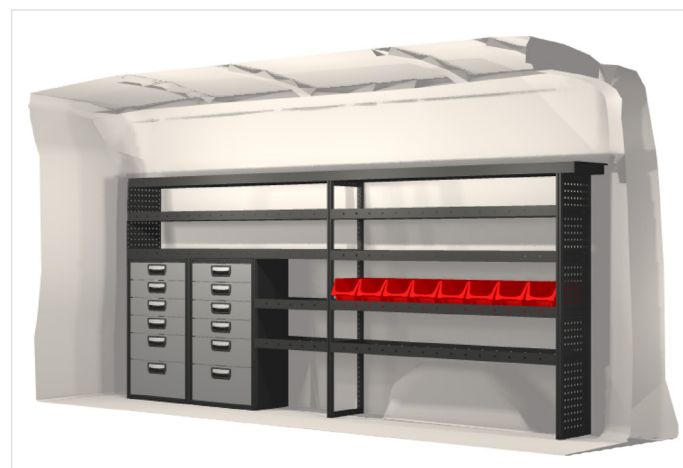
20100203	1512 mm	324 mm	918 mm	27.4



20100215	2835 mm	324 mm	1296 mm	52.3



20100218	1512 mm	486 mm	1404 mm	68.9

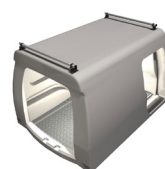


20100214	2808 mm	324 mm	1350 mm	99.4

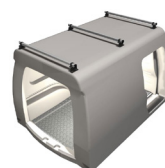


--	--	--	--	--

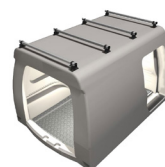
Floor and lining configuration will vary dependent on vehicle



Roof bar kit  
Part No: RR180627000



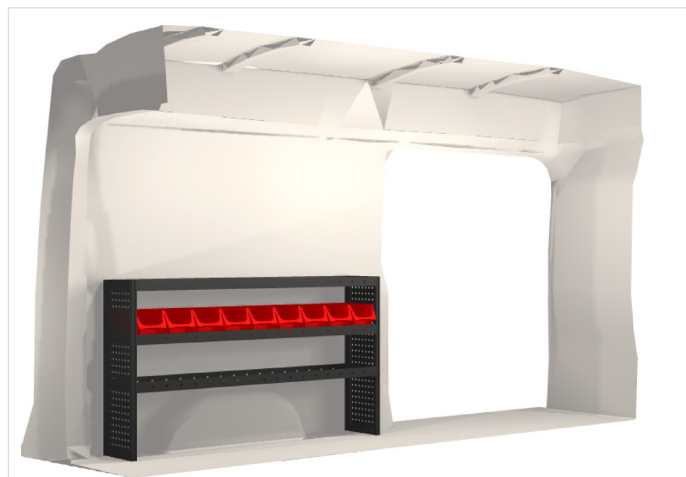
Roof bar kit  
Part No: RR180637000



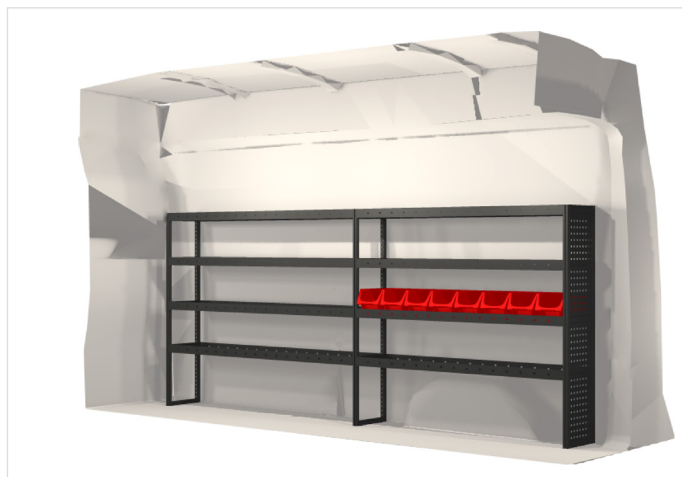
Roof bar kit  
Part No: RR188647000

# Ford

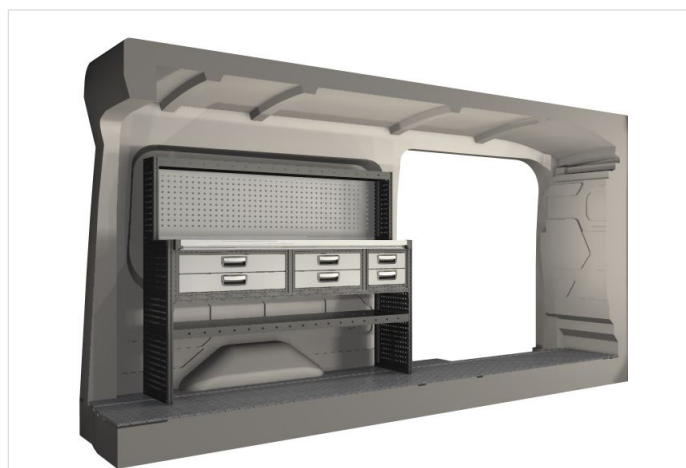
Transit L3 H3 12.4 - 13 m<sup>3</sup> 2014-



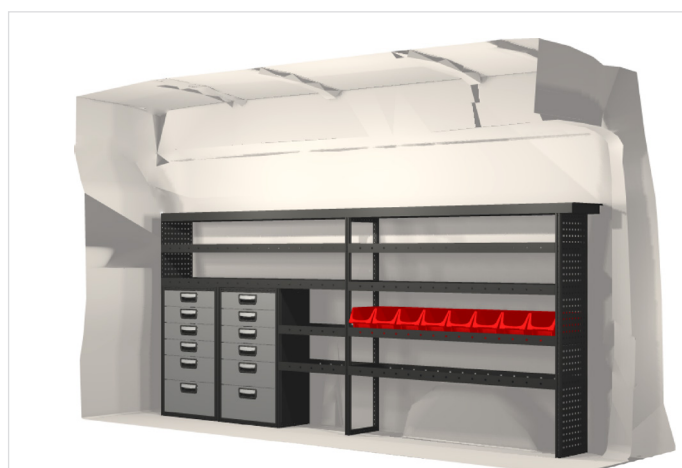
20100203	1512 mm	324 mm	918 mm	27.4



20100215	2835 mm	324 mm	1296 mm	52.3



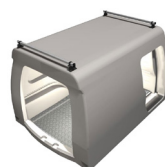
20100218	1512 mm	486 mm	1404 mm	68.9



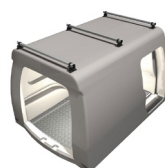
20100214	2808 mm	324 mm	1350 mm	99.4



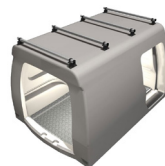
Floor and lining configuration will vary dependent on vehicle				



Roof bar kit  
Part No: RR180627000



Roof bar kit  
Part No: RR180637000



Roof bar kit  
Part No: RR188647000

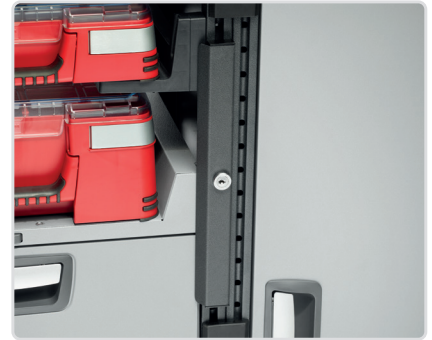
# Accessories



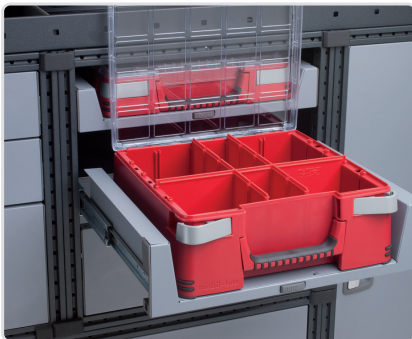
**Grab handle**  
Part No: 50014-03



**Load stop**  
Part No: 50250-03



**Modul-Lock**  
Part No: 50211-03 (cam lock)  
Part No: 50212-03 (padlock)



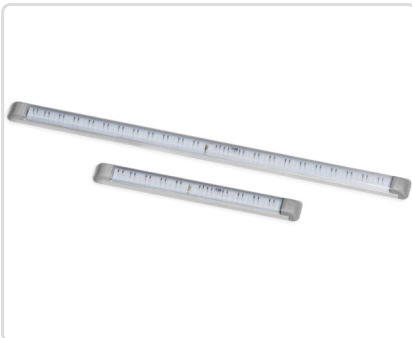
**Mobil-Box**  
Part No: 10566, width 486 mm (low)  
Part No: 10563, width 486 mm (high)



**Storage holder for Mobil-Box**  
Part No: 50230-03



**Lashing eyelet**  
Part No: 50025-03



**Ambient light**  
Part. No: 19701-03 - 324 mm  
Part. No: 19702-03 - 648 mm



**Lashing with narrow strap, 2.0 m (2 pcs)**  
Part No: 11722



**Lashing with ratchet, 4.5 m**  
Part No: 11716



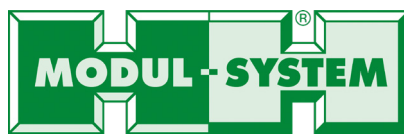
**Modul-Box 324 x 324 mm, Part No: 10487-03**  
**Divider, width 324 mm, Part No: 10488-03**  
**Window, width 324 mm, Part No: 10489-03**  
**Handle, width 324 mm, Part No: 10490-03**



**Modul-Box 162 x 324 mm, Part No: 10480-03**  
**Modul-Box 162 x 486 mm, Part No: 10481-03**  
**Divider, Width 162 mm, Part No: 10482-03**  
**Window, Width 162 mm, Part No: 10483-03**



**Insert for drawers**  
For 108 mm high drawer, Part No: 10530-03\*  
For 108 mm high drawer, Part No: 10533-03\*\*  
For 162/216 mm high drawer, Part No: 10535-03\*\*\*  
\*162 mm length, 324 mm depth, \*\*324 mm length, 486 mm depth,  
\*\*\*324 mm length, 324 mm depth.



## **Modul-System Limited**

Maddison House

Thomas Road, Wooburn Industrial Park  
Wooburn Green, Buckinghamshire. HP10 0PE

01628 528034 (Option 2)  
[sales@modul-system.co.uk](mailto:sales@modul-system.co.uk)  
[www.modul-system.co.uk](http://www.modul-system.co.uk)